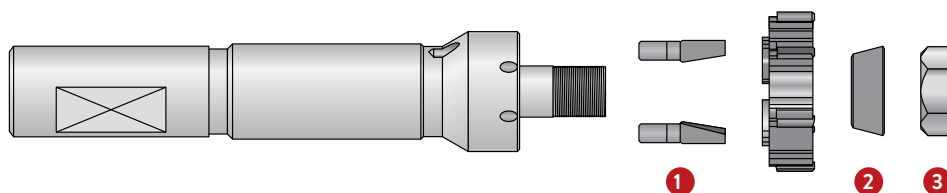


## Držáky pro výstružníky s řeznými kroužky

4550 Série | Krátké | Náhradní díly



| Obj. č.<br>(Kompletní držák*) |               | Náhradní díly |              |                        |             |      | Velikost klíče<br>(mm) |
|-------------------------------|---------------|---------------|--------------|------------------------|-------------|------|------------------------|
| S ploškou                     | Bez plošky    | 1<br>Kolíky   | Počet kolíků | 2<br>Kruželový kroužek | 3<br>Matice |      |                        |
| 4550-MC-010                   | 4550A-MC-010  | 2000-CO-010   | 3            | 2010-AC-010            | 2000-DA-010 | 10   |                        |
| 4550-MC-020                   | 4550A-MC-020  | 2000-CO-020   | 3            | 2010-AC-010            | 2000-DA-010 | 10   |                        |
| 4550-MC-030                   | 4550A-MC-030  | 2000-CO-030   | 3            | 2010-AC-020            | 2000-DA-020 | 13   |                        |
| 4550-MC-040                   | 4550A-MC-040  | 2000-CO-040   | 2            | 2010-AC-030            | 2000-DA-060 | 19   |                        |
| 4550-MC-050                   | 4550A-MC-050  | 2000-CO-060   | 2            | 2010-AC-040            | 2000-DA-090 | 22   |                        |
| <b>m</b> 4550-MC-060          | 4550A-MC-060  | 2000-CO-060   | 2            | 2010-AC-050            | 2000-GH-880 | 30 ♦ |                        |
| 4550-MC-070                   | 4550A-MC-070  | 2000-CO-070   | 2            | 2010-AC-050            | 2000-GH-880 | 30 ♦ |                        |
| 4550-MC-080                   | 4550A-MC-080  | 2000-CO-080   | 2            | 2010-AC-060            | 2000-GH-900 | 40 ♦ |                        |
| 4550-MC-090                   | 4550A-MC-090  | 2000-CO-090   | 2            | 2010-AC-060            | 2000-GH-900 | 40 ♦ |                        |
| 4550-MC-100                   | 4550A-MC-100  | 2000-CO-090   | 2            | 2010-AC-070            | 2000-GH-920 | 56 ♦ |                        |
| 4550-MC-110                   | 4550A-MC-110  | 2000-CO-090   | 2            | 2010-AC-070            | 2000-GH-920 | 56 ♦ |                        |
| <b>i</b> 94550-MC-010         | 94550A-MC-010 | 2000-CO-010   | 3            | 2010-AC-010            | 2000-DA-010 | 10   |                        |
| 94550-MC-020                  | 94550A-MC-020 | 2000-CO-020   | 3            | 2010-AC-010            | 2000-DA-010 | 10   |                        |
| 94550-MC-030                  | 94550A-MC-030 | 2000-CO-030   | 3            | 2010-AC-020            | 2000-DA-020 | 13   |                        |
| 94550-MC-040                  | 94550A-MC-040 | 2000-CO-040   | 2            | 2010-AC-030            | 2000-DA-060 | 19   |                        |
| 94550-MC-050                  | 94550A-MC-050 | 2000-CO-060   | 2            | 2010-AC-040            | 2000-DA-090 | 22   |                        |
| <b>i</b> 94550-MC-060         | 94550A-MC-060 | 2000-CO-060   | 2            | 2010-AC-050            | 2000-GH-880 | 30 ♦ |                        |
| 94550-MC-070                  | 94550A-MC-070 | 2000-CO-070   | 2            | 2010-AC-050            | 2000-GH-880 | 30 ♦ |                        |
| 94550-MC-080                  | 94550A-MC-080 | 2000-CO-080   | 2            | 2010-AC-060            | 2000-GH-900 | 40 ♦ |                        |
| 94550-MC-090                  | 94550A-MC-090 | 2000-CO-090   | 2            | 2010-AC-060            | 2000-GH-900 | 40 ♦ |                        |
| 94550-MC-100                  | 94550A-MC-100 | 2000-CO-090   | 2            | 2010-AC-070            | 2000-GH-920 | 56 ♦ |                        |
| 94550-MC-110                  | 94550A-MC-110 | 2000-CO-090   | 2            | 2010-AC-070            | 2000-GH-920 | 56 ♦ |                        |

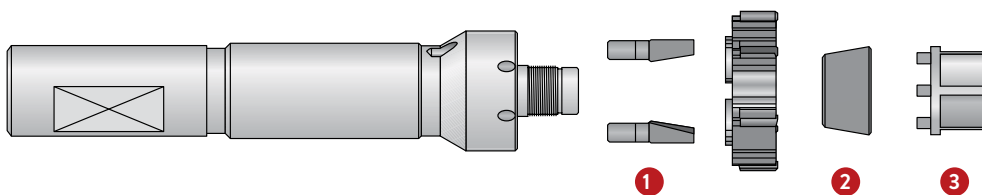
\*Řezný kroužek není součástí držáku.

♦ Montážní klíč

**m** = Metrické (mm)  
**i** = Palcové (in)

## Držáky pro výstružníky s řeznými kroužky

4555 Série | Krátké | Náhradní díly



| Obj. č.<br>(Kompletní držák*) |               | Náhradní díly |                 |                     |  |  |                  |    | Velikost<br>klíče<br>(mm) |
|-------------------------------|---------------|---------------|-----------------|---------------------|--|--|------------------|----|---------------------------|
| S ploškou                     | Bez plošky    | 1             |                 | 2                   |  |  | 3                |    |                           |
|                               |               | Kolíky        | Počet<br>kolíků | Kuželový<br>kroužek | Kuželový kroužek<br>(pro 2. rozpínání) | Kuželový kroužek<br>(pro 3. rozpínání) | Nastavovací klíč |    |                           |
| 4555-MC-010                   | 4555A-MC-010  | 2000-CO-010   | 3               | 4001-AC-115         | 4001-AC-215                            | -                                      | 4001-CH-015      | 10 |                           |
| 4555-MC-020                   | 4555A-MC-020  | 2000-CO-020   | 3               | 4001-AC-115         | 4001-AC-215                            | -                                      | 4001-CH-015      | 10 |                           |
| 4555-MC-030                   | 4555A-MC-030  | 2000-CO-030   | 3               | 4001-AC-125         | 4001-AC-225                            | 4001-AC-325                            | 4001-CH-025      | 13 |                           |
| 4555-MC-035                   | 4555A-MC-035  | 2000-CO-040   | 2               | 4001-AC-125         | 4001-AC-225                            | 4001-AC-325                            | 4001-CH-025      | 13 |                           |
| 4555-MC-040                   | 4555A-MC-040  | 2000-CO-040   | 2               | 4001-AC-135         | 4001-AC-235                            | 4001-AC-335                            | 4001-CH-035      | 18 |                           |
| 4555-MC-045                   | 4555A-MC-045  | 2000-CO-050   | 2               | 4001-AC-135         | 4001-AC-235                            | 4001-AC-335                            | 4001-CH-035      | 18 |                           |
| 4555-MC-050                   | 4555A-MC-050  | 2000-CO-060   | 2               | 4001-AC-145         | 4001-AC-245                            | 4001-AC-345                            | 4001-CH-045      | 22 |                           |
| 4555-MC-060                   | 4555A-MC-060  | 2000-CO-060   | 2               | 4001-AC-155         | 4001-AC-255                            | 4001-AC-355                            | 4001-CH-055      | 26 |                           |
| 4555-MC-070                   | 4555A-MC-070  | 2000-CO-070   | 2               | 4001-AC-155         | 4001-AC-255                            | 4001-AC-355                            | 4001-CH-055      | 26 |                           |
| 4555-MC-075                   | 4555A-MC-075  | 2000-CO-080   | 2               | 4001-AC-155         | 4001-AC-255                            | 4001-AC-355                            | 4001-CH-055      | 26 |                           |
| 4555-MC-080                   | 4555A-MC-080  | 2000-CO-080   | 2               | 4001-AC-165         | 4001-AC-265                            | 4001-AC-365                            | 4001-CH-065      | 34 |                           |
| 4555-MC-085                   | 4555A-MC-085  | 2000-CO-090   | 2               | 4001-AC-165         | 4001-AC-265                            | 4001-AC-365                            | 4001-CH-065      | 34 |                           |
| 4555-MC-090                   | 4555A-MC-090  | 2000-CO-090   | 2               | 4001-AC-165         | 4001-AC-265                            | 4001-AC-365                            | 4001-CH-065      | 34 |                           |
| 4555-MC-100                   | 4555A-MC-100  | 2000-CO-090   | 2               | 4001-AC-185         | 4001-AC-285                            | 4001-AC-385                            | 4001-CH-085      | 46 |                           |
| 4555-MC-110                   | 4555A-MC-110  | 2000-CO-090   | 2               | 4001-AC-185         | 4001-AC-285                            | 4001-AC-385                            | 4001-CH-085      | 46 |                           |
| 94555-MC-010                  | 94555A-MC-010 | 2000-CO-010   | 3               | 4001-AC-115         | 4001-AC-215                            | -                                      | 4001-CH-015      | 10 |                           |
| 94555-MC-020                  | 94555A-MC-020 | 2000-CO-020   | 3               | 4001-AC-115         | 4001-AC-215                            | -                                      | 4001-CH-015      | 10 |                           |
| 94555-MC-030                  | 94555A-MC-030 | 2000-CO-030   | 3               | 4001-AC-125         | 4001-AC-225                            | 4001-AC-325                            | 4001-CH-025      | 13 |                           |
| 94555-MC-035                  | 94555A-MC-035 | 2000-CO-040   | 2               | 4001-AC-125         | 4001-AC-225                            | 4001-AC-325                            | 4001-CH-025      | 13 |                           |
| 94555-MC-040                  | 94555A-MC-040 | 2000-CO-040   | 2               | 4001-AC-135         | 4001-AC-235                            | 4001-AC-335                            | 4001-CH-035      | 18 |                           |
| 94555-MC-045                  | 94555A-MC-045 | 2000-CO-050   | 2               | 4001-AC-135         | 4001-AC-235                            | 4001-AC-335                            | 4001-CH-035      | 18 |                           |
| 94555-MC-050                  | 94555A-MC-050 | 2000-CO-060   | 2               | 4001-AC-145         | 4001-AC-245                            | 4001-AC-345                            | 4001-CH-045      | 22 |                           |
| 94555-MC-060                  | 94555A-MC-060 | 2000-CO-060   | 2               | 4001-AC-155         | 4001-AC-255                            | 4001-AC-355                            | 4001-CH-055      | 26 |                           |
| 94555-MC-070                  | 94555A-MC-070 | 2000-CO-070   | 2               | 4001-AC-155         | 4001-AC-255                            | 4001-AC-355                            | 4001-CH-055      | 26 |                           |
| 94555-MC-075                  | 94555A-MC-075 | 2000-CO-080   | 2               | 4001-AC-155         | 4001-AC-255                            | 4001-AC-355                            | 4001-CH-055      | 26 |                           |
| 94555-MC-080                  | 94555A-MC-080 | 2000-CO-080   | 2               | 4001-AC-165         | 4001-AC-265                            | 4001-AC-365                            | 4001-CH-065      | 34 |                           |
| 94555-MC-085                  | 94555A-MC-085 | 2000-CO-090   | 2               | 4001-AC-165         | 4001-AC-265                            | 4001-AC-365                            | 4001-CH-065      | 34 |                           |
| 94555-MC-090                  | 94555A-MC-090 | 2000-CO-090   | 2               | 4001-AC-165         | 4001-AC-265                            | 4001-AC-365                            | 4001-CH-065      | 34 |                           |
| 94555-MC-100                  | 94555A-MC-100 | 2000-CO-090   | 2               | 4001-AC-185         | 4001-AC-285                            | 4001-AC-385                            | 4001-CH-085      | 46 |                           |
| 94555-MC-110                  | 94555A-MC-110 | 2000-CO-090   | 2               | 4001-AC-185         | 4001-AC-285                            | 4001-AC-385                            | 4001-CH-085      | 46 |                           |

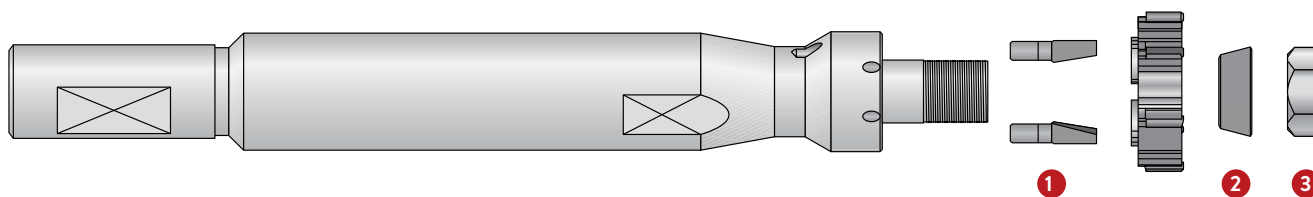
\*Řezný kroužek není součástí držáku.

Ⓜ = Metrické (mm)

Ⓢ = Palcové (in)

## Držáky pro výstružníky s řeznými kroužky

4500 Série | Dlouhé | Náhradní díly



| Obj. č.<br>(Kompletní držák*) |               | Náhradní díly |              |                  |             |                     |  |
|-------------------------------|---------------|---------------|--------------|------------------|-------------|---------------------|--|
| S ploškou                     | Bez plošky    | 1             |              | 2                | 3           |                     |  |
|                               |               | Kolíky        | Počet kolíků | Kuželový kroužek | Matice      | Velikost klíče (mm) |  |
| 4500-MC-010                   | 4500A-MC-010  | 2000-CO-010   | 3            | 2010-AC-010      | 2000-DA-010 | 10                  |  |
| 4500-MC-020                   | 4500A-MC-020  | 2000-CO-020   | 3            | 2010-AC-010      | 2000-DA-010 | 10                  |  |
| 4500-MC-030                   | 4500A-MC-030  | 2000-CO-030   | 3            | 2010-AC-020      | 2000-DA-020 | 13                  |  |
| 4500-MC-040                   | 4500A-MC-040  | 2000-CO-040   | 2            | 2010-AC-030      | 2000-DA-060 | 19                  |  |
| 4500-MC-050                   | 4500A-MC-050  | 2000-CO-060   | 2            | 2010-AC-040      | 2000-DA-090 | 22                  |  |
| <b>m</b> 4500-MC-060          | 4500A-MC-060  | 2000-CO-060   | 2            | 2010-AC-050      | 2000-GH-880 | 30 ♦                |  |
| 4500-MC-070                   | 4500A-MC-070  | 2000-CO-070   | 2            | 2010-AC-050      | 2000-GH-880 | 30 ♦                |  |
| 4500-MC-080                   | 4500A-MC-080  | 2000-CO-080   | 2            | 2010-AC-060      | 2000-GH-900 | 40 ♦                |  |
| 4500-MC-090                   | 4500A-MC-090  | 2000-CO-090   | 2            | 2010-AC-060      | 2000-GH-900 | 40 ♦                |  |
| 4500-MC-100                   | 4500A-MC-100  | 2000-CO-090   | 2            | 2010-AC-070      | 2000-GH-920 | 56 ♦                |  |
| 4500-MC-110                   | 4500A-MC-110  | 2000-CO-090   | 2            | 2010-AC-070      | 2000-GH-920 | 56 ♦                |  |
| 94500-MC-010                  | 94500A-MC-010 | 2000-CO-010   | 3            | 2010-AC-010      | 2000-DA-010 | 10                  |  |
| 94500-MC-020                  | 94500A-MC-020 | 2000-CO-020   | 3            | 2010-AC-010      | 2000-DA-010 | 10                  |  |
| 94500-MC-030                  | 94500A-MC-030 | 2000-CO-030   | 3            | 2010-AC-020      | 2000-DA-020 | 13                  |  |
| 94500-MC-040                  | 94500A-MC-040 | 2000-CO-040   | 2            | 2010-AC-030      | 2000-DA-060 | 19                  |  |
| 94500-MC-050                  | 94500A-MC-050 | 2000-CO-060   | 2            | 2010-AC-040      | 2000-DA-090 | 22                  |  |
| <b>i</b> 94500-MC-060         | 94500A-MC-060 | 2000-CO-060   | 2            | 2010-AC-050      | 2000-GH-880 | 30 ♦                |  |
| 94500-MC-070                  | 94500A-MC-070 | 2000-CO-070   | 2            | 2010-AC-050      | 2000-GH-880 | 30 ♦                |  |
| 94500-MC-080                  | 94500A-MC-080 | 2000-CO-080   | 2            | 2010-AC-060      | 2000-GH-900 | 40 ♦                |  |
| 94500-MC-090                  | 94500A-MC-090 | 2000-CO-090   | 2            | 2010-AC-060      | 2000-GH-900 | 40 ♦                |  |
| 94500-MC-100                  | 94500A-MC-100 | 2000-CO-090   | 2            | 2010-AC-070      | 2000-GH-920 | 56 ♦                |  |
| 94500-MC-110                  | 94500A-MC-110 | 2000-CO-090   | 2            | 2010-AC-070      | 2000-GH-920 | 56 ♦                |  |

\*Řezný kroužek není součástí držáku.

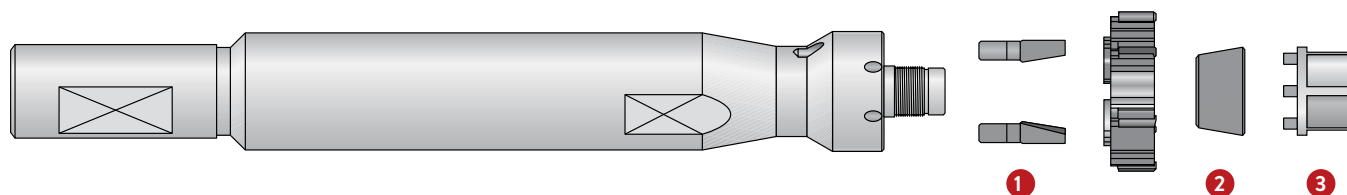
♦ Montážní klíč

**m** = Metrické (mm)

**i** = Palcové (in)

## Držáky pro výstružníky s řeznými kroužky

4505 Série | Dlouhé | Náhradní díly



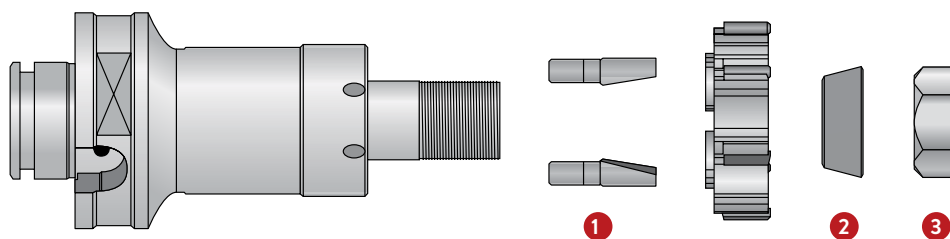
| Obj. č.<br>(Kompletní držák*) |               | Náhradní díly |              |                  |                                     |                                     |                  |    |                     |
|-------------------------------|---------------|---------------|--------------|------------------|-------------------------------------|-------------------------------------|------------------|----|---------------------|
| S ploškou                     | Bez plošky    | 1             |              | 2                |                                     |                                     | 3                |    | Velikost klíče (mm) |
|                               |               | Kolíky        | Počet kolíků | Kuželový kroužek | Kuželový kroužek (pro 2. rozpínání) | Kuželový kroužek (pro 3. rozpínání) | Nastavovací klíč |    |                     |
| 4505-MC-010                   | 4505A-MC-010  | 2000-CO-010   | 3            | 4001-AC-115      | 4001-AC-215                         | -                                   | 4001-CH-015      | 10 |                     |
| 4505-MC-020                   | 4505A-MC-020  | 2000-CO-020   | 3            | 4001-AC-115      | 4001-AC-215                         | -                                   | 4001-CH-015      | 10 |                     |
| 4505-MC-030                   | 4505A-MC-030  | 2000-CO-030   | 3            | 4001-AC-125      | 4001-AC-225                         | 4001-AC-325                         | 4001-CH-025      | 13 |                     |
| 4505-MC-035                   | 4505A-MC-035  | 2000-CO-040   | 2            | 4001-AC-125      | 4001-AC-225                         | 4001-AC-325                         | 4001-CH-025      | 13 |                     |
| 4505-MC-040                   | 4505A-MC-040  | 2000-CO-040   | 2            | 4001-AC-135      | 4001-AC-235                         | 4001-AC-335                         | 4001-CH-035      | 18 |                     |
| 4505-MC-045                   | 4505A-MC-045  | 2000-CO-050   | 2            | 4001-AC-135      | 4001-AC-235                         | 4001-AC-335                         | 4001-CH-035      | 18 |                     |
| 4505-MC-050                   | 4505A-MC-050  | 2000-CO-060   | 2            | 4001-AC-145      | 4001-AC-245                         | 4001-AC-345                         | 4001-CH-045      | 22 |                     |
| 4505-MC-060                   | 4505A-MC-060  | 2000-CO-060   | 2            | 4001-AC-155      | 4001-AC-255                         | 4001-AC-355                         | 4001-CH-055      | 26 |                     |
| 4505-MC-070                   | 4505A-MC-070  | 2000-CO-070   | 2            | 4001-AC-155      | 4001-AC-255                         | 4001-AC-355                         | 4001-CH-055      | 26 |                     |
| 4505-MC-075                   | 4505A-MC-075  | 2000-CO-080   | 2            | 4001-AC-155      | 4001-AC-255                         | 4001-AC-355                         | 4001-CH-055      | 26 |                     |
| 4505-MC-080                   | 4505A-MC-080  | 2000-CO-080   | 2            | 4001-AC-165      | 4001-AC-265                         | 4001-AC-365                         | 4001-CH-065      | 34 |                     |
| 4505-MC-085                   | 4505A-MC-085  | 2000-CO-090   | 2            | 4001-AC-165      | 4001-AC-265                         | 4001-AC-365                         | 4001-CH-065      | 34 |                     |
| 4505-MC-090                   | 4505A-MC-090  | 2000-CO-090   | 2            | 4001-AC-165      | 4001-AC-265                         | 4001-AC-365                         | 4001-CH-065      | 34 |                     |
| 4505-MC-100                   | 4505A-MC-100  | 2000-CO-090   | 2            | 4001-AC-185      | 4001-AC-285                         | 4001-AC-385                         | 4001-CH-085      | 46 |                     |
| 4505-MC-110                   | 4505A-MC-110  | 2000-CO-090   | 2            | 4001-AC-185      | 4001-AC-285                         | 4001-AC-385                         | 4001-CH-085      | 46 |                     |
| 94505-MC-010                  | 94505A-MC-010 | 2000-CO-010   | 3            | 4001-AC-115      | 4001-AC-215                         | -                                   | 4001-CH-015      | 10 |                     |
| 94505-MC-020                  | 94505A-MC-020 | 2000-CO-020   | 3            | 4001-AC-115      | 4001-AC-215                         | -                                   | 4001-CH-015      | 10 |                     |
| 94505-MC-030                  | 94505A-MC-030 | 2000-CO-030   | 3            | 4001-AC-125      | 4001-AC-225                         | 4001-AC-325                         | 4001-CH-025      | 13 |                     |
| 94505-MC-035                  | 94505A-MC-035 | 2000-CO-040   | 2            | 4001-AC-125      | 4001-AC-225                         | 4001-AC-325                         | 4001-CH-025      | 13 |                     |
| 94505-MC-040                  | 94505A-MC-040 | 2000-CO-040   | 2            | 4001-AC-135      | 4001-AC-235                         | 4001-AC-335                         | 4001-CH-035      | 18 |                     |
| 94505-MC-045                  | 94505A-MC-045 | 2000-CO-050   | 2            | 4001-AC-135      | 4001-AC-235                         | 4001-AC-335                         | 4001-CH-035      | 18 |                     |
| 94505-MC-050                  | 94505A-MC-050 | 2000-CO-060   | 2            | 4001-AC-145      | 4001-AC-245                         | 4001-AC-345                         | 4001-CH-045      | 22 |                     |
| 94505-MC-060                  | 94505A-MC-060 | 2000-CO-060   | 2            | 4001-AC-155      | 4001-AC-255                         | 4001-AC-355                         | 4001-CH-055      | 26 |                     |
| 94505-MC-070                  | 94505A-MC-070 | 2000-CO-070   | 2            | 4001-AC-155      | 4001-AC-255                         | 4001-AC-355                         | 4001-CH-055      | 26 |                     |
| 94505-MC-075                  | 94505A-MC-075 | 2000-CO-080   | 2            | 4001-AC-155      | 4001-AC-255                         | 4001-AC-355                         | 4001-CH-055      | 26 |                     |
| 94505-MC-080                  | 94505A-MC-080 | 2000-CO-080   | 2            | 4001-AC-165      | 4001-AC-265                         | 4001-AC-365                         | 4001-CH-065      | 34 |                     |
| 94505-MC-085                  | 94505A-MC-085 | 2000-CO-090   | 2            | 4001-AC-165      | 4001-AC-265                         | 4001-AC-365                         | 4001-CH-065      | 34 |                     |
| 94505-MC-090                  | 94505A-MC-090 | 2000-CO-090   | 2            | 4001-AC-165      | 4001-AC-265                         | 4001-AC-365                         | 4001-CH-065      | 34 |                     |
| 94505-MC-100                  | 94505A-MC-100 | 2000-CO-090   | 2            | 4001-AC-185      | 4001-AC-285                         | 4001-AC-385                         | 4001-CH-085      | 46 |                     |
| 94505-MC-110                  | 94505A-MC-110 | 2000-CO-090   | 2            | 4001-AC-185      | 4001-AC-285                         | 4001-AC-385                         | 4001-CH-085      | 46 |                     |

\*Řezný kroužek není součástí držáku.

Ⓜ = Metrické (mm)  
 ⓘ = Palcové (in)

## Držáky pro výstružníky s řeznými kroužky

4330 Série | Krátké | Náhradní díly



| Obj. č.<br>(Kompletní držák*) | Náhradní díly |              |                          |             |                        |
|-------------------------------|---------------|--------------|--------------------------|-------------|------------------------|
|                               | 1<br>Kolíky   | Počet kolíků | 2<br>Kónelový<br>kroužek | 3<br>Matice | Velikost klíče<br>(mm) |
| <b>4330-MC-010</b>            | 2000-CO-010   | 3            | 2010-AC-010              | 2000-DA-010 | 10                     |
| <b>4330-MC-020</b>            | 2000-CO-020   | 3            | 2010-AC-010              | 2000-DA-010 | 10                     |
| <b>4330-MC-030</b>            | 2000-CO-030   | 3            | 2010-AC-020              | 2000-DA-020 | 13                     |
| <b>4330-MC-040</b>            | 2000-CO-040   | 2            | 2010-AC-030              | 2000-DA-060 | 19                     |
| <b>4330-MC-050</b>            | 2000-CO-060   | 2            | 2010-AC-040              | 2000-DA-090 | 22                     |
| <b>4330-MC-060</b>            | 2000-CO-060   | 2            | 2010-AC-050              | 2000-GH-880 | 30 ♦                   |
| <b>4330-MC-070</b>            | 2000-CO-070   | 2            | 2010-AC-050              | 2000-GH-880 | 30 ♦                   |
| <b>4330-MC-080</b>            | 2000-CO-080   | 2            | 2010-AC-060              | 2000-GH-900 | 40 ♦                   |
| <b>4330-MC-090</b>            | 2000-CO-090   | 2            | 2010-AC-060              | 2000-GH-900 | 40 ♦                   |
| <b>4330-MC-100</b>            | 2000-CO-090   | 2            | 2010-AC-070              | 2000-GH-920 | 56 ♦                   |
| <b>4330-MC-110</b>            | 2000-CO-090   | 2            | 2010-AC-070              | 2000-GH-920 | 56 ♦                   |

\*Řezný kroužek není součástí držáku.

♦ Montážní klíč

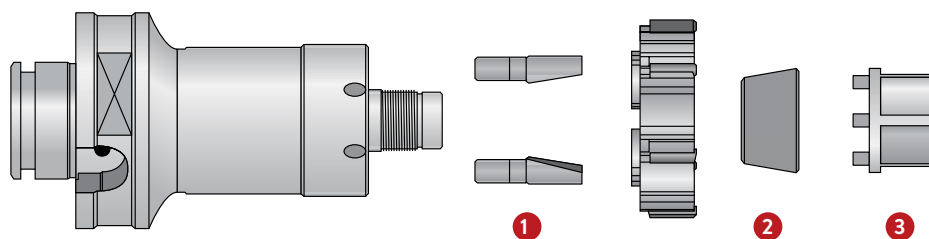
m

m = Metrické (mm)

i = Palcové (in)

## Držáky pro výstružníky s řeznými kroužky

4335 Série | Krátké | Náhradní díly



| Obj. č.<br>(Kompletní držák*) | Náhradní díly |                 |                           |  |  |                       |                           |
|-------------------------------|---------------|-----------------|---------------------------|--|--|-----------------------|---------------------------|
|                               | 1<br>Kolíky   | Počet<br>kolíků | 2<br>Kruželový<br>kroužek | Kruželový<br>kroužek<br>(pro 2. rozpínání) | Kruželový<br>kroužek<br>(pro 3. rozpínání) | 3<br>Nastavovací klíč | Velikost<br>klíče<br>(mm) |
| <b>4335-MC-010</b>            | 2000-CO-010   | 3               | 4001-AC-115               | 4001-AC-215                                | –  | 4001-CH-015           | 10                        |
| <b>4335-MC-020</b>            | 2000-CO-020   | 3               | 4001-AC-115               | 4001-AC-215                                | –  | 4001-CH-015           | 10                        |
| <b>4335-MC-030</b>            | 2000-CO-030   | 3               | 4001-AC-125               | 4001-AC-225                                | 4001-AC-325                                | 4001-CH-025           | 13                        |
| <b>4335-MC-035</b>            | 2000-CO-040   | 2               | 4001-AC-125               | 4001-AC-225                                | 4001-AC-325                                | 4001-CH-025           | 13                        |
| <b>4335-MC-040</b>            | 2000-CO-040   | 2               | 4001-AC-135               | 4001-AC-235                                | 4001-AC-335                                | 4001-CH-035           | 18                        |
| <b>4335-MC-045</b>            | 2000-CO-050   | 2               | 4001-AC-135               | 4001-AC-235                                | 4001-AC-335                                | 4001-CH-035           | 18                        |
| <b>4335-MC-050</b>            | 2000-CO-060   | 2               | 4001-AC-145               | 4001-AC-245                                | 4001-AC-345                                | 4001-CH-045           | 22                        |
| <b>4335-MC-060</b>            | 2000-CO-060   | 2               | 4001-AC-155               | 4001-AC-255                                | 4001-AC-355                                | 4001-CH-055           | 26                        |
| <b>4335-MC-070</b>            | 2000-CO-070   | 2               | 4001-AC-155               | 4001-AC-255                                | 4001-AC-355                                | 4001-CH-055           | 26                        |
| <b>4335-MC-075</b>            | 2000-CO-080   | 2               | 4001-AC-155               | 4001-AC-255                                | 4001-AC-355                                | 4001-CH-055           | 26                        |
| <b>4335-MC-080</b>            | 2000-CO-080   | 2               | 4001-AC-165               | 4001-AC-265                                | 4001-AC-365                                | 4001-CH-065           | 34                        |
| <b>4335-MC-085</b>            | 2000-CO-090   | 2               | 4001-AC-165               | 4001-AC-265                                | 4001-AC-365                                | 4001-CH-065           | 34                        |
| <b>4335-MC-090</b>            | 2000-CO-090   | 2               | 4001-AC-165               | 4001-AC-265                                | 4001-AC-365                                | 4001-CH-065           | 34                        |
| <b>4335-MC-100</b>            | 2000-CO-090   | 2               | 4001-AC-185               | 4001-AC-285                                | 4001-AC-385                                | 4001-CH-085           | 46                        |
| <b>4335-MC-110</b>            | 2000-CO-090   | 2               | 4001-AC-185               | 4001-AC-285                                | 4001-AC-385                                | 4001-CH-085           | 46                        |

\*Řezný kroužek není součástí držáku.

A

VRTÁNÍ

B

VYVRTÁVÁNÍ

C

VYSTRUŽOVÁNÍ

D

VÁLEČKOVÁNÍ

F

ZÁVITOVÁNÍ

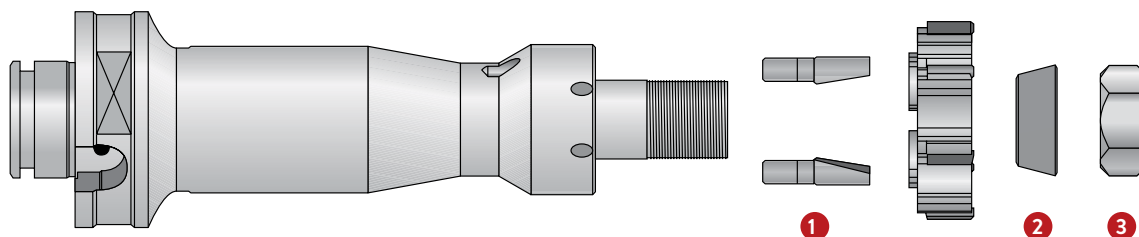
X

SPECIÁLY

 ⓘ = Metrické (mm)  
 ⓘ = Palcové (in)

## Držáky pro výstružníky s řeznými kroužky

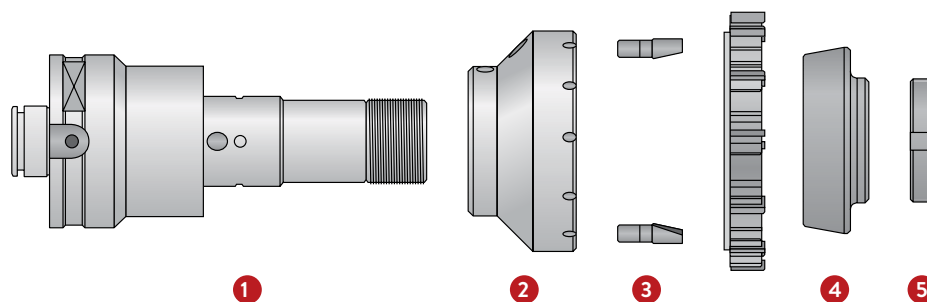
4350 Série | Standardní délka | Náhradní díly



| Obj. č.<br>(Kompletní držák*) | Náhradní díly |              |                       |             |      | Velikost klíče<br>(mm) |
|-------------------------------|---------------|--------------|-----------------------|-------------|------|------------------------|
|                               | 1<br>Kolíky   | Počet kolíků | 2<br>Kružkový kroužek | 3<br>Matice |      |                        |
| 4350-MC-010                   | 2000-CO-010   | 3            | 2010-AC-010           | 2000-DA-010 | 10   |                        |
| 4350-MC-020                   | 2000-CO-020   | 3            | 2010-AC-010           | 2000-DA-010 | 10   |                        |
| 4350-MC-030                   | 2000-CO-030   | 3            | 2010-AC-020           | 2000-DA-020 | 13   |                        |
| 4350-MC-040                   | 2000-CO-040   | 2            | 2010-AC-030           | 2000-DA-060 | 19   |                        |
| 4350-MC-050                   | 2000-CO-060   | 2            | 2010-AC-040           | 2000-DA-090 | 22   |                        |
| 4350-MC-060                   | 2000-CO-060   | 2            | 2010-AC-050           | 2000-GH-880 | 30 ♦ |                        |
| 4350-MC-070                   | 2000-CO-070   | 2            | 2010-AC-050           | 2000-GH-880 | 30 ♦ |                        |
| 4350-MC-080                   | 2000-CO-080   | 2            | 2010-AC-060           | 2000-GH-900 | 40 ♦ |                        |
| 4350-MC-090                   | 2000-CO-090   | 2            | 2010-AC-060           | 2000-GH-900 | 40 ♦ |                        |
| 4350-MC-100                   | 2000-CO-090   | 2            | 2010-AC-070           | 2000-GH-920 | 56 ♦ |                        |
| 4350-MC-110                   | 2000-CO-090   | 2            | 2010-AC-070           | 2000-GH-920 | 56 ♦ |                        |

\*Řezný kroužek není součástí držáku.

♦ Montážní klíč



| Obj. č.<br>(Kompletní držák*) | Náhradní díly |              |             |              |                       |             | Velikost klíče<br>(mm) |
|-------------------------------|---------------|--------------|-------------|--------------|-----------------------|-------------|------------------------|
|                               | 1<br>Držák    | 2<br>Příruba | 3<br>Kolíky | Počet kolíků | 4<br>Kružkový kroužek | 5<br>Matice |                        |
| 4350-MC-120                   | 4350-MA-120   | 4355-FL-035  | 2000-CO-090 | 2            | 2060-BU-010           | 2000-GH-095 | 58 ♦                   |
| 4350-MC-130                   | 4350-MA-120   | 4355-FL-045  | 2000-CO-090 | 2            | 2060-BU-020           | 2000-GH-095 | 58 ♦                   |
| 4350-MC-140                   | 4350-MA-120   | 4355-FL-055  | 2000-CO-090 | 2            | 2060-BU-030           | 2000-GH-095 | 58 ♦                   |
| 4350-MC-150                   | 4350-MA-120   | 4355-FL-065  | 2000-CO-090 | 2            | 2060-BU-030           | 2000-GH-095 | 58 ♦                   |
| 4350-MC-160                   | 4350-MA-120   | 4355-FL-075  | 2000-CO-100 | 2            | 2060-BU-040           | 2000-GH-095 | 58 ♦                   |
| 4350-MC-170                   | 4350-MA-120   | 4355-FL-085  | 2000-CO-100 | 2            | 2060-BU-040           | 2000-GH-095 | 58 ♦                   |
| 4350-MC-180                   | 4350-MA-120   | 4355-FL-095  | 2000-CO-100 | 2            | 2060-BU-050           | 2000-GH-095 | 58 ♦                   |
| 4350-MC-190                   | 4350-MA-120   | 4355-FL-105  | 2000-CO-110 | 2            | 2060-BU-060           | 2000-GH-095 | 58 ♦                   |
| 4350-MC-200                   | 4350-MA-200   | 4355-FL-115  | 2000-CO-110 | 2            | 2060-BU-070           | 2000-GH-120 | 90 ♦                   |
| 4350-MC-210                   | 4350-MA-200   | 4355-FL-125  | 2000-CO-110 | 2            | 2060-BU-080           | 2000-GH-120 | 90 ♦                   |
| 4350-MC-220                   | 4350-MA-200   | 4355-FL-135  | 2000-CO-120 | 2            | 2060-BU-090           | 2000-GH-120 | 90 ♦                   |
| 4350-MC-230                   | 4350-MA-200   | 4355-FL-145  | 2000-CO-120 | 2            | 2060-BU-100           | 2000-GH-120 | 90 ♦                   |
| 4350-MC-240                   | 4350-MA-200   | 4355-FL-155  | 2000-CO-120 | 2            | 2060-BU-110           | 2000-GH-120 | 90 ♦                   |

\*Řezný kroužek není součástí držáku.

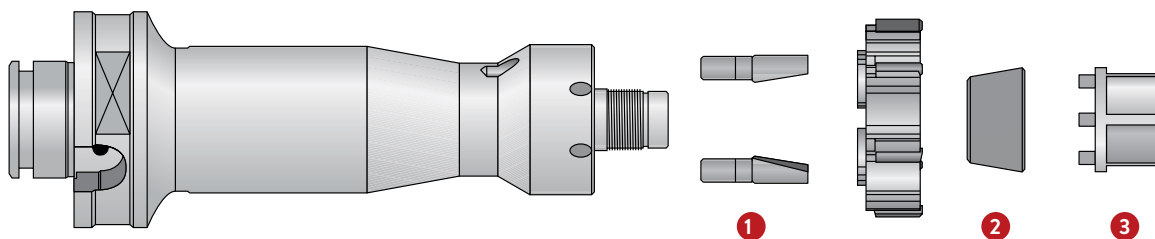
♦ Montážní klíč

m = Metrické (mm)

i = Palcové (in)

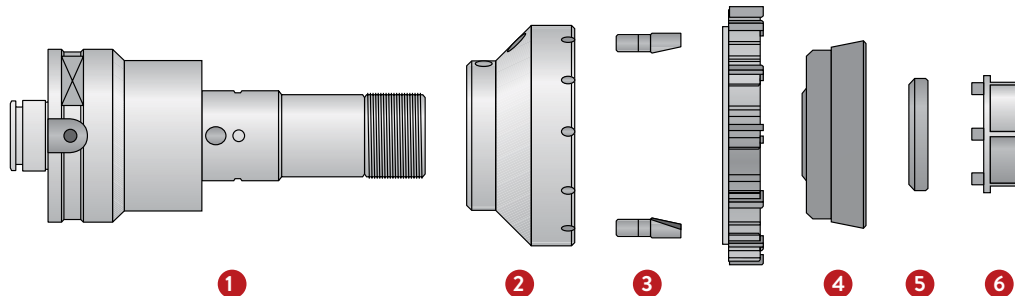
## Držáky pro výstružníky s řeznými kroužky

4355 Série | Standardní délka | Náhradní díly



| Obj. č.<br>(Kompletní držák*) | Náhradní díly |              |                  |  |                                     |                       |    | Velikost klíče (mm) |
|-------------------------------|---------------|--------------|------------------|--|-------------------------------------|-----------------------|----|---------------------|
|                               | 1<br>Kolíky   | Počet kolíků | Kuželový kroužek | 2<br>Kuželový kroužek (pro 2. rozpínání) | Kuželový kroužek (pro 3. rozpínání) | 3<br>Nastavovací klíč |    |                     |
| 4355-MC-010                   | 2000-CO-010   | 3            | 4001-AC-115      | 4001-AC-215                              | -                                   | 4001-CH-015           | 10 |                     |
| 4355-MC-020                   | 2000-CO-020   | 3            | 4001-AC-115      | 4001-AC-215                              | -                                   | 4001-CH-015           | 10 |                     |
| 4355-MC-030                   | 2000-CO-030   | 3            | 4001-AC-125      | 4001-AC-225                              | 4001-AC-325                         | 4001-CH-025           | 13 |                     |
| 4355-MC-035                   | 2000-CO-040   | 2            | 4001-AC-125      | 4001-AC-225                              | 4001-AC-325                         | 4001-CH-025           | 13 |                     |
| 4355-MC-040                   | 2000-CO-040   | 2            | 4001-AC-135      | 4001-AC-235                              | 4001-AC-335                         | 4001-CH-035           | 18 |                     |
| 4355-MC-045                   | 2000-CO-050   | 2            | 4001-AC-135      | 4001-AC-235                              | 4001-AC-335                         | 4001-CH-035           | 18 |                     |
| 4355-MC-050                   | 2000-CO-060   | 2            | 4001-AC-145      | 4001-AC-245                              | 4001-AC-345                         | 4001-CH-045           | 22 |                     |
| 4355-MC-060                   | 2000-CO-060   | 2            | 4001-AC-155      | 4001-AC-255                              | 4001-AC-355                         | 4001-CH-055           | 26 |                     |
| 4355-MC-070                   | 2000-CO-070   | 2            | 4001-AC-155      | 4001-AC-255                              | 4001-AC-355                         | 4001-CH-055           | 26 |                     |
| 4355-MC-075                   | 2000-CO-080   | 2            | 4001-AC-155      | 4001-AC-255                              | 4001-AC-355                         | 4001-CH-055           | 26 |                     |
| 4355-MC-080                   | 2000-CO-080   | 2            | 4001-AC-165      | 4001-AC-265                              | 4001-AC-365                         | 4001-CH-065           | 34 |                     |
| 4355-MC-085                   | 2000-CO-090   | 2            | 4001-AC-165      | 4001-AC-265                              | 4001-AC-365                         | 4001-CH-065           | 34 |                     |
| 4355-MC-090                   | 2000-CO-090   | 2            | 4001-AC-165      | 4001-AC-265                              | 4001-AC-365                         | 4001-CH-065           | 34 |                     |
| 4355-MC-100                   | 2000-CO-090   | 2            | 4001-AC-185      | 4001-AC-285                              | 4001-AC-385                         | 4001-CH-085           | 46 |                     |
| 4355-MC-110                   | 2000-CO-090   | 2            | 4001-AC-185      | 4001-AC-285                              | 4001-AC-385                         | 4001-CH-085           | 46 |                     |

\*Řezný kroužek není součástí držáku.



| Obj. č.<br>(Kompletní držák*) | Náhradní díly |              |             |              |                       |                           |                       | Velikost klíče (mm) |
|-------------------------------|---------------|--------------|-------------|--------------|-----------------------|---------------------------|-----------------------|---------------------|
|                               | 1<br>Držák    | 2<br>Příruba | 3<br>Kolíky | Počet kolíků | 4<br>Kuželový kroužek | 5<br>Matic                | 6<br>Nastavovací klíč |                     |
| 4355-MC-120                   | 4355-MA-120   | 4355-FL-035  | 2000-CO-090 | 2            | 4001-AC-116           | 4001 <sup>e</sup> -GH-035 | 4001-CH-135           | 46                  |
| 4355-MC-130                   | 4355-MA-120   | 4355-FL-045  | 2000-CO-090 | 2            | 4001-AC-126           | 4001-GH-035               | 4001-CH-135           | 46                  |
| 4355-MC-140                   | 4355-MA-120   | 4355-FL-055  | 2000-CO-090 | 2            | 4001-AC-136           | 4001-GH-035               | 4001-CH-135           | 46                  |
| 4355-MC-150                   | 4355-MA-120   | 4355-FL-065  | 2000-CO-090 | 2            | 4001-AC-136           | 4001-GH-035               | 4001-CH-135           | 46                  |
| 4355-MC-160                   | 4355-MA-120   | 4355-FL-075  | 2000-CO-100 | 2            | 4001-AC-146           | 4001-GH-035               | 4001-CH-135           | 46                  |
| 4355-MC-170                   | 4355-MA-120   | 4355-FL-085  | 2000-CO-100 | 2            | 4001-AC-146           | 4001-GH-035               | 4001-CH-135           | 46                  |
| 4355-MC-180                   | 4355-MA-120   | 4355-FL-095  | 2000-CO-100 | 2            | 4001-AC-156           | 4001-GH-035               | 4001-CH-135           | 46                  |
| 4355-MC-190                   | 4355-MA-120   | 4355-FL-105  | 2000-CO-110 | 2            | 4001-AC-166           | 4001-GH-035               | 4001-CH-135           | 46                  |
| 4355-MC-200                   | 4355-MA-200   | 4355-FL-115  | 2000-CO-110 | 2            | 4001-AC-176           | 4001-GH-115               | 4001-CH-115           | 46                  |
| 4355-MC-210                   | 4355-MA-200   | 4355-FL-125  | 2000-CO-110 | 2            | 4001-AC-186           | 4001-GH-115               | 4001-CH-115           | 46                  |
| 4355-MC-220                   | 4355-MA-200   | 4355-FL-135  | 2000-CO-120 | 2            | 4001-AC-196           | 4001-GH-115               | 4001-CH-115           | 46                  |
| 4355-MC-230                   | 4355-MA-200   | 4355-FL-145  | 2000-CO-120 | 2            | 4001-AC-117           | 4001-GH-115               | 4001-CH-115           | 46                  |
| 4355-MC-240                   | 4355-MA-200   | 4355-FL-155  | 2000-CO-120 | 2            | 4001-AC-127           | 4001-GH-115               | 4001-CH-115           | 46                  |

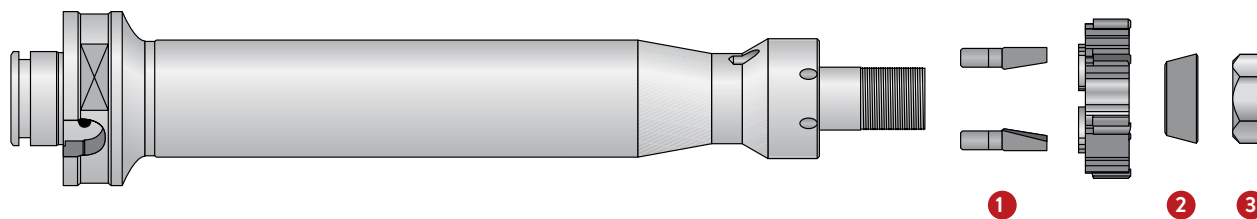
\*Řezný kroužek není součástí držáku.

<sup>m</sup> = Metrické (mm)  
<sup>i</sup> = Palcové (in)



## Držáky pro výstružníky s řeznými kroužky

4300 Série | Dlouhé | Náhradní díly

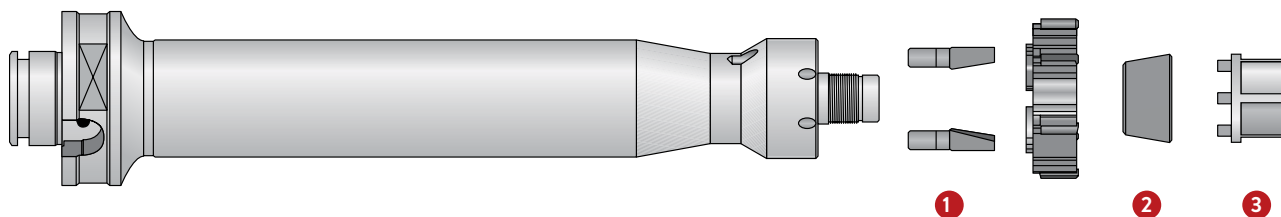


| Obj. č.<br>(Kompletní držák*) | Náhradní díly |                   |                       |             |                        |
|-------------------------------|---------------|-------------------|-----------------------|-------------|------------------------|
|                               | Kolíky        | 1<br>Počet kolíků | 2<br>Kružkový kroužek | 3<br>Matice | Velikost klíče<br>(mm) |
| <b>4300-MC-010</b>            | 2000-CO-010   | 3                 | 2010-AC-010           | 2000-DA-010 | 10                     |
| <b>4300-MC-020</b>            | 2000-CO-020   | 3                 | 2010-AC-010           | 2000-DA-010 | 10                     |
| <b>4300-MC-030</b>            | 2000-CO-030   | 3                 | 2010-AC-020           | 2000-DA-020 | 13                     |
| <b>4300-MC-040</b>            | 2000-CO-040   | 2                 | 2010-AC-030           | 2000-DA-060 | 19                     |
| <b>4300-MC-050</b>            | 2000-CO-060   | 2                 | 2010-AC-040           | 2000-DA-090 | 22                     |
| <b>4300-MC-060</b>            | 2000-CO-060   | 2                 | 2010-AC-050           | 2000-GH-880 | 30                     |
| <b>4300-MC-070</b>            | 2000-CO-070   | 2                 | 2010-AC-050           | 2000-GH-880 | 30                     |
| <b>4300-MC-080</b>            | 2000-CO-080   | 2                 | 2010-AC-060           | 2000-GH-900 | 40                     |
| <b>4300-MC-090</b>            | 2000-CO-090   | 2                 | 2010-AC-060           | 2000-GH-900 | 40                     |
| <b>4300-MC-100</b>            | 2000-CO-090   | 2                 | 2010-AC-070           | 2000-GH-920 | 56                     |
| <b>4300-MC-110</b>            | 2000-CO-090   | 2                 | 2010-AC-070           | 2000-GH-920 | 56                     |

\*Řezný kroužek není součástí držáku.

## Držáky pro výstružníky s řeznými kroužky

4305 Série | Dlouhé | Náhradní díly



| Obj. č.<br>(Kompletní držák*) | Náhradní díly |              |   |   |                  |             |    | Velikost klíče (mm) |
|-------------------------------|---------------|--------------|---|---|------------------|-------------|----|---------------------|
|                               | 1<br>Kolíky   | Počet kolíků | 2<br>Kruželový kroužek (pro 2. rozpínání) | 3<br>Kruželový kroužek (pro 3. rozpínání) | Nastavovací klíč |             |    |                     |
| 4305-MC-010                   | 2000-CO-010   | 3            | 4001-AC-115                               | 4001-AC-215                               | –                | 4001-CH-015 | 10 |                     |
| 4305-MC-020                   | 2000-CO-020   | 3            | 4001-AC-115                               | 4001-AC-215                               | –                | 4001-CH-015 | 10 |                     |
| 4305-MC-030                   | 2000-CO-030   | 3            | 4001-AC-125                               | 4001-AC-225                               | 4001-AC-325      | 4001-CH-025 | 13 |                     |
| 4305-MC-035                   | 2000-CO-040   | 2            | 4001-AC-125                               | 4001-AC-225                               | 4001-AC-325      | 4001-CH-025 | 13 |                     |
| 4305-MC-040                   | 2000-CO-040   | 2            | 4001-AC-135                               | 4001-AC-235                               | 4001-AC-335      | 4001-CH-035 | 18 |                     |
| 4305-MC-045                   | 2000-CO-050   | 2            | 4001-AC-135                               | 4001-AC-235                               | 4001-AC-335      | 4001-CH-035 | 18 |                     |
| 4305-MC-050                   | 2000-CO-060   | 2            | 4001-AC-145                               | 4001-AC-245                               | 4001-AC-345      | 4001-CH-045 | 22 |                     |
| 4305-MC-060                   | 2000-CO-060   | 2            | 4001-AC-155                               | 4001-AC-255                               | 4001-AC-355      | 4001-CH-055 | 26 |                     |
| 4305-MC-070                   | 2000-CO-070   | 2            | 4001-AC-155                               | 4001-AC-255                               | 4001-AC-355      | 4001-CH-055 | 26 |                     |
| 4305-MC-075                   | 2000-CO-080   | 2            | 4001-AC-155                               | 4001-AC-255                               | 4001-AC-355      | 4001-CH-055 | 26 |                     |
| 4305-MC-080                   | 2000-CO-080   | 2            | 4001-AC-165                               | 4001-AC-265                               | 4001-AC-365      | 4001-CH-065 | 34 |                     |
| 4305-MC-085                   | 2000-CO-090   | 2            | 4001-AC-165                               | 4001-AC-265                               | 4001-AC-365      | 4001-CH-065 | 34 |                     |
| 4305-MC-090                   | 2000-CO-090   | 2            | 4001-AC-165                               | 4001-AC-265                               | 4001-AC-365      | 4001-CH-065 | 34 |                     |
| 4305-MC-100                   | 2000-CO-090   | 2            | 4001-AC-185                               | 4001-AC-285                               | 4001-AC-385      | 4001-CH-085 | 46 |                     |
| 4305-MC-110                   | 2000-CO-090   | 2            | 4001-AC-185                               | 4001-AC-285                               | 4001-AC-385      | 4001-CH-085 | 46 |                     |

\*Řezný kroužek není součástí držáku.

Ⓜ = Metrické (mm)  
 ⓘ = Palcové (in)